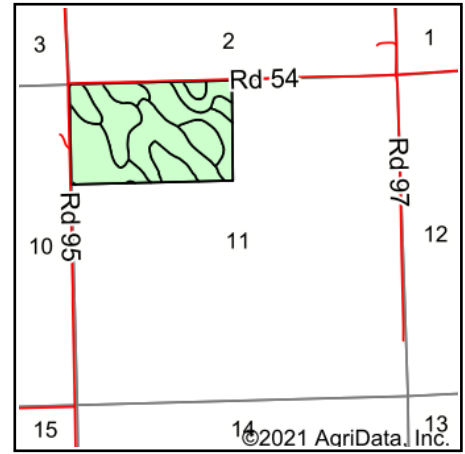
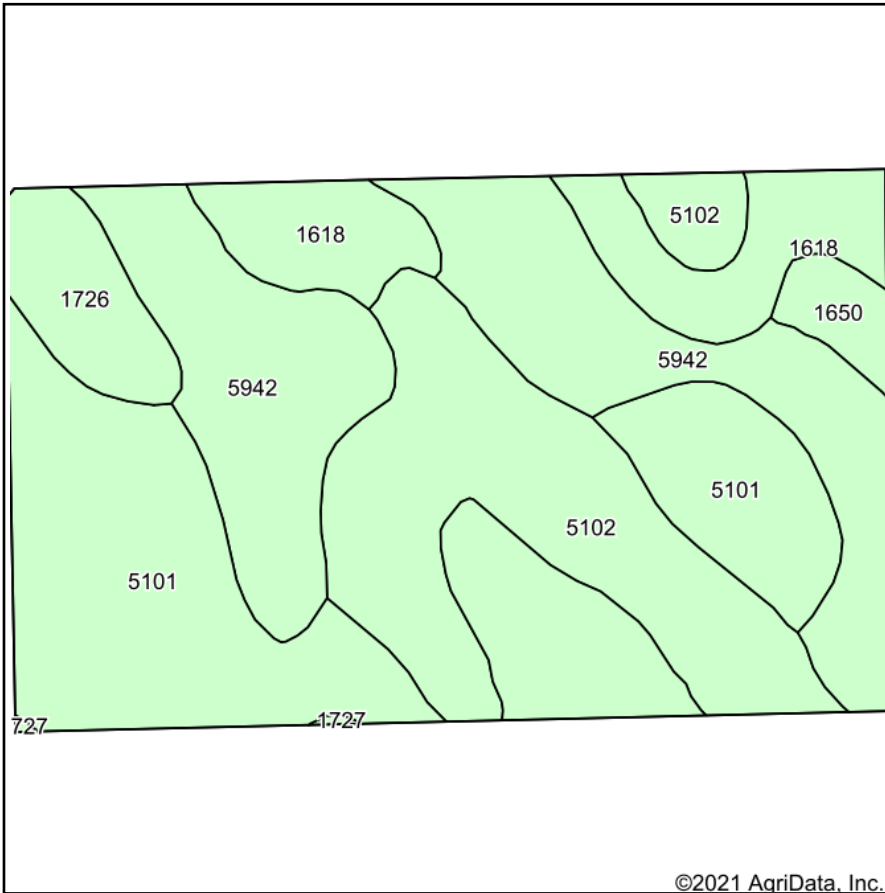


# Soils Map



State: **Nebraska**  
 County: **Cheyenne**  
 Location: **11-16N-51W**  
 Township: **Union Valley**  
 Acres: **97.88**  
 Date: **1/29/2021**

**KRAUPIE'S**  
 REAL ESTATE & AUCTIONEERS  
 farmauction.net  
 915 Main St • Bridgeport, NE 69336 • 308-262-1150

Maps Provided By:  
  
 CUSTOMIZED ONLINE MAPPING  
 © AgriData, Inc. 2021 www.AgriDataInc.com



Soils data provided by USDA and NRCS.

Code	Soil Description	Acres	Percent of field	Non-Irr Class *c	Irr Class *c	Range Production (lbs/acre/yr)	SRPG	Corn Irrigated	Dry beans Irrigated	Winter wheat	Winter wheat Irrigated	*n NCCPI Soybeans
5101	Alliance loam, 1 to 3 percent slopes	31.60	32.3%	Ile	Ile	1703	61	140	38	41		49
5942	Duroc loam, 0 to 1 percent slopes	27.03	27.6%	Ilc	Iw	2450	56					60
5102	Alliance loam, 3 to 6 percent slopes	21.92	22.4%	IIle	IIle	1700	57	130	34	36		47
1618	Keith loam, 1 to 3 percent slopes	10.49	10.7%	Ile	Ile	1727	63	134				55
1726	Rosebud loam, 1 to 3 percent slopes	4.76	4.9%	IIle	IIle	1703	31	124	32	28	62	38
1650	Kuma loam, 0 to 1 percent slopes	1.97	2.0%	Ilc	Iw	1703	58	144	38	40	79	57
1727	Rosebud loam, 3 to 6 percent slopes	0.11	0.1%	Ive	IIle	1700	30	110	28	31		35
<b>Weighted Average</b>						<b>1911.2</b>	<b>57.4</b>	<b>97.7</b>	<b>22.2</b>	<b>23.5</b>	<b>4.6</b>	<b>*n 51.8</b>

\*n: The aggregation method is "Weighted Average using all components"

\*c: Using Capabilities Class Dominant Condition Aggregation Method  
 Soils data provided by USDA and NRCS.