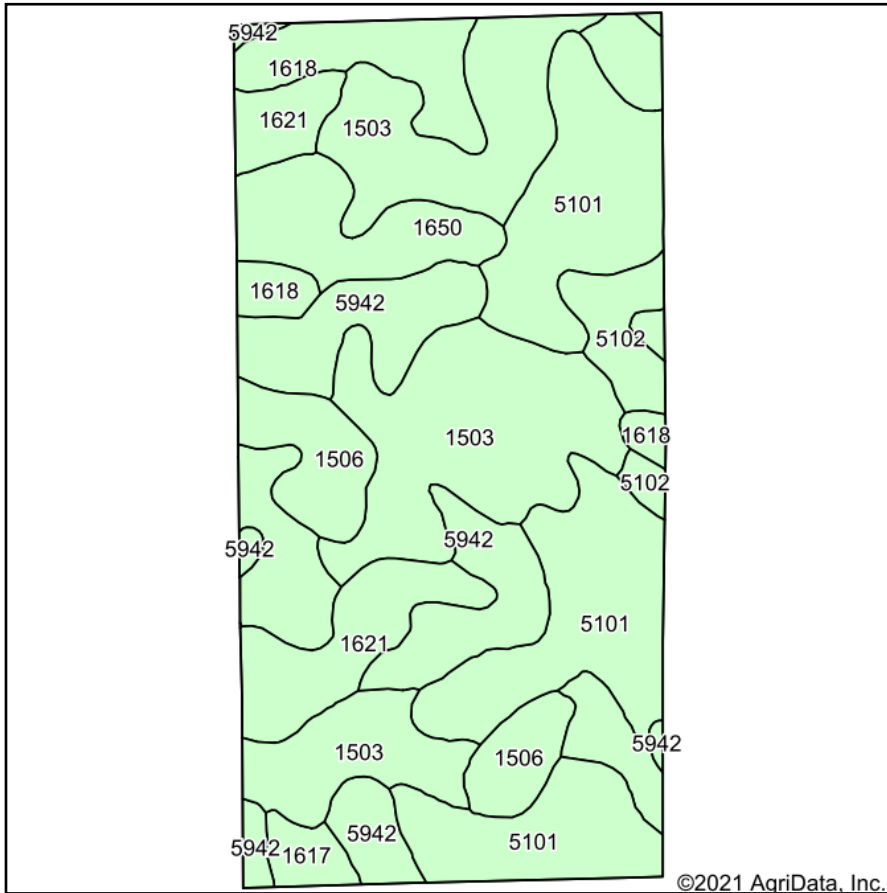
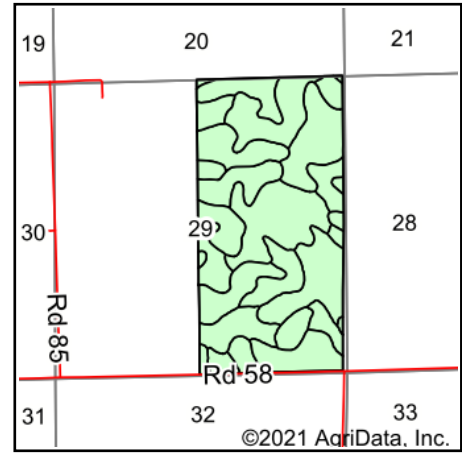


# Soils Map



Soils data provided by USDA and NRCS.



State: **Nebraska**  
 County: **Cheyenne**  
 Location: **29-17N-51W**  
 Township: **Union Valley**  
 Acres: **319.56**  
 Date: **1/29/2021**

**KRAUPIE'S**  
 REAL ESTATE & AUCTIONEERS  
 farmauction.net  
 915 Main St • Bridgeport, NE 69336 • 308-262-1150

Maps Provided By:  
  
 CUSTOMIZED ONLINE MAPPING  
 © AgriData, Inc. 2021 www.AgriDataInc.com



| Code                    | Soil Description                          | Acres | Percent of field | Non-Irr Class *c | Irr Class *c | Range Production (lbs/acre/yr) | SRPG        | Corn Irrigated | Dry beans Irrigated | Sugar beets Irrigated | Winter wheat | Winter wheat Irrigated | *n NCCPI Soybeans |
|-------------------------|---|-------|------------------|------------------|--------------|--------------------------------|-------------|----------------|---------------------|-----------------------|--------------|------------------------|-------------------|
| 1503                    | Altvan loam, 3 to 6 percent slopes        | 83.35 | 26.1%            | IVe              | IVe          | 1500                           | 45          | 87             |                     |                       | 22           |                        | 33                |
| 5101                    | Alliance loam, 1 to 3 percent slopes      | 77.49 | 24.2%            | Ile              | Ile          | 1703                           | 61          | 140            | 38                  |                       | 41           |                        | 49                |
| 5942                    | Duroc loam, 0 to 1 percent slopes         | 40.04 | 12.5%            | IIc              | Iw           | 2450                           | 56          |                |                     |                       |              |                        | 60                |
| 1618                    | Keith loam, 1 to 3 percent slopes         | 31.99 | 10.0%            | Ile              | Ile          | 1727                           | 63          | 134            |                     |                       |              |                        | 55                |
| 1621                    | Keith loam, 3 to 6 percent slopes         | 23.33 | 7.3%             | IIIe             | IIIe         | 1703                           | 61          | 132            | 24                  |                       | 31           |                        | 51                |
| 5102                    | Alliance loam, 3 to 6 percent slopes      | 21.34 | 6.7%             | IIIe             | IIIe         | 1700                           | 57          | 130            | 34                  |                       | 36           |                        | 47                |
| 1506                    | Altvan-Dix complex, 3 to 9 percent slopes | 19.34 | 6.1%             | IVe              | IVe          | 1543                           | 27          |                |                     |                       |              |                        | 31                |
| 1650                    | Kuma loam, 0 to 1 percent slopes          | 18.33 | 5.7%             | IIc              | Iw           | 1703                           | 58          | 144            | 38                  |                       | 40           | 79                     | 57                |
| 1617                    | Keith loam, 0 to 1 percent slopes         | 4.35  | 1.4%             | IIc              | Iw           | 1307                           | 64          | 133            | 36                  | 23                    | 42           |                        | 55                |
| <b>Weighted Average</b> |   |       |                  |                  |              | <b>1730.8</b>                  | <b>53.9</b> | <b>98.4</b>    | <b>15.9</b>         | <b>0.3</b>            | <b>23.2</b>  | <b>4.5</b>             | <b>*n 46.3</b>    |

\*n: The aggregation method is "Weighted Average using all components"

\*c: Using Capabilities Class Dominant Condition Aggregation Method

Soils data provided by USDA and NRCS.