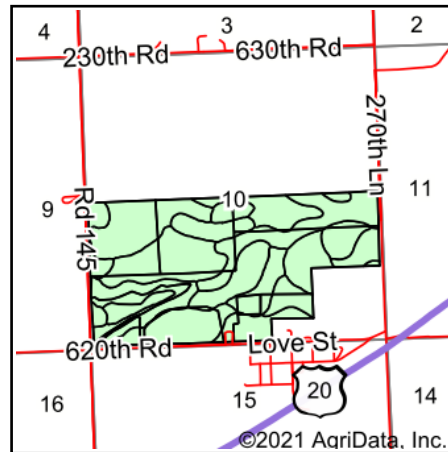
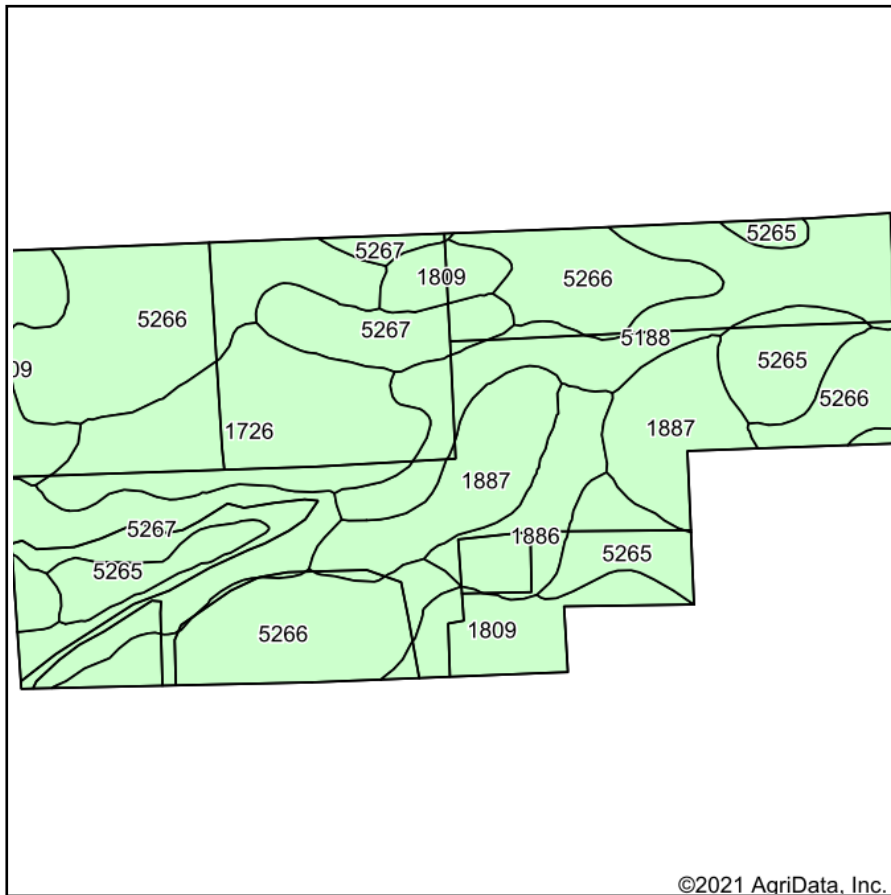


# Soils Map



State: **Nebraska**  
 County: **Sheridan**  
 Location: **10-32N-43W**  
 Township: **North Rushville**  
 Acres: **266.24**  
 Date: **2/11/2021**



915 Main St • Bridgeport, NE 69336 • 308-262-1150

Maps Provided By:



© AgriData, Inc. 2021

www.AgriDataInc.com



Soils data provided by USDA and NRCS.

Code	Soil Description	Acres	Percent of field	Non-Irr Class *c	Irr Class *c	Range Production (lbs/acre/yr)	SRPG	Corn	Corn Irrigated	Dry beans Irrigated	Sugar beets Irrigated	Winter wheat	Winter wheat Irrigated	*n NCCPI Soybeans
5266	Tuthill fine sandy loam, 3 to 6 percent slopes	75.60	28.4%	IIIe	IIIe	2485	42		115			31		31
5267	Tuthill fine sandy loam, 6 to 9 percent slopes	36.94	13.9%	IVe	IVe	2500	40		95			26		31
1726	Rosebud loam, 1 to 3 percent slopes	32.05	12.0%	IIIe		1803	32	55	85	1	1	29	2	30
5188	Keya loam, 0 to 2 percent slopes	31.00	11.6%	IIc	Ie	3055	63	45	135			37		56
1887	Valent fine sand, 9 to 20 percent slopes	29.07	10.9%	Vle		1935								16
5265	Tuthill fine sandy loam, 0 to 3 percent slopes	25.28	9.5%	IIIe	Ile	2485	44		120			33		32
1809	Satanta fine sandy loam, 1 to 3 percent slopes	24.10	9.1%	IIIe	Ile	2364	55		114	30	19	35		36
1886	Valent fine sand, 3 to 9 percent slopes	12.20	4.6%	Vle		1935	22							16
<b>Weighted Average</b>						<b>2375.1</b>	<b>38.8</b>	<b>11.9</b>	<b>93.5</b>	<b>2.8</b>	<b>1.8</b>	<b>26.5</b>	<b>0.2</b>	<b>*n 32</b>

\*n: The aggregation method is "Weighted Average using all components"

\*c: Using Capabilities Class Dominant Condition Aggregation Method

Soils data provided by USDA and NRCS.