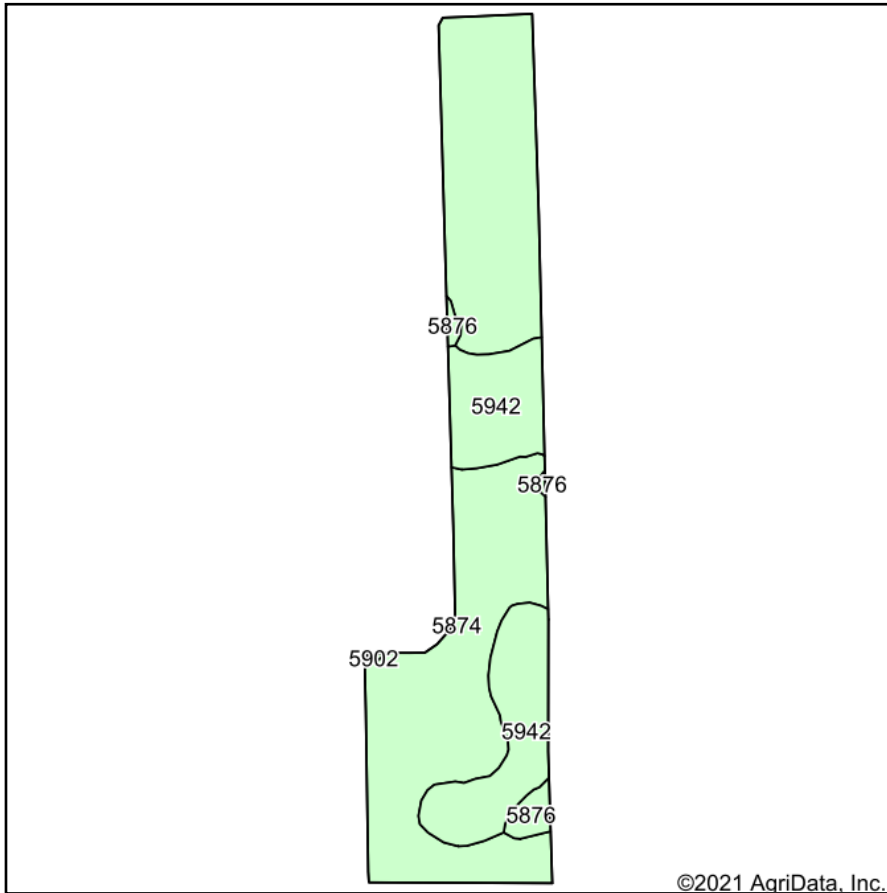
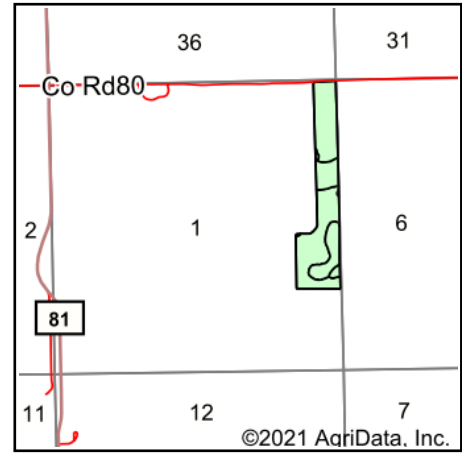


Soils Map



Soils data provided by USDA and NRCS.



State: **Nebraska**
 County: **Morrill**
 Location: **1-18N-52W**
 Township: **Redington**
 Acres: **45.03**
 Date: **3/10/2021**

KRAUPIE'S
 REAL ESTATE & AUCTIONEERS
farmauction.net
 915 Main St • Bridgeport, NE 69336 • 308-262-1150

Maps Provided By:

 CUSTOMIZED ONLINE MAPPING
 © AgriData, Inc. 2021 www.AgriDataInc.com



Area Symbol: NE123, Soil Area Version: 21

Code	Soil Description	Acres	Percent of field	Non-Irr Class *c	Irr Class *c	Range Production (lbs/acre/yr)	SRPG	Corn Irrigated	Dry beans Irrigated	Sugar beets Irrigated	Winter wheat	*n NCCPI Soybeans
5874	Tripp very fine sandy loam, 1 to 3 percent slopes	32.87	73.0%	IIIe	IIe	1693	57	130	37	24	38	44
5942	Duroc loam, 0 to 1 percent slopes	11.08	24.6%	IIc	Iw	2450	57					60
5876	Tripp very fine sandy loam, 3 to 6 percent slopes	1.02	2.3%	IIIe	IIIe	1700	55	120	32	20	34	44
5902	Alice fine sandy loam, 3 to 6 percent slopes	0.06	0.1%	IVe	IIIe	1881	42	119	31	19	30	37
Weighted Average						1879.7	56.9	97.8	27.8	18	28.5	*n 47.9

*n: The aggregation method is "Weighted Average using all components"

*c: Using Capabilities Class Dominant Condition Aggregation Method

Soils data provided by USDA and NRCS.