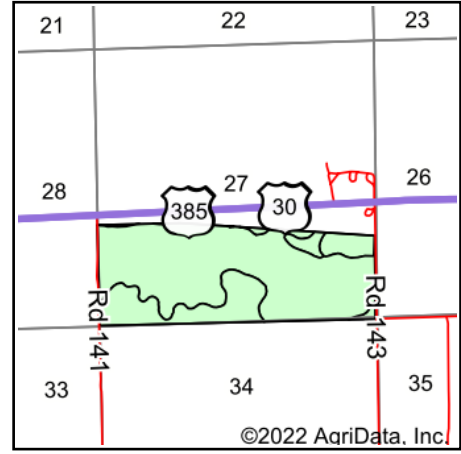
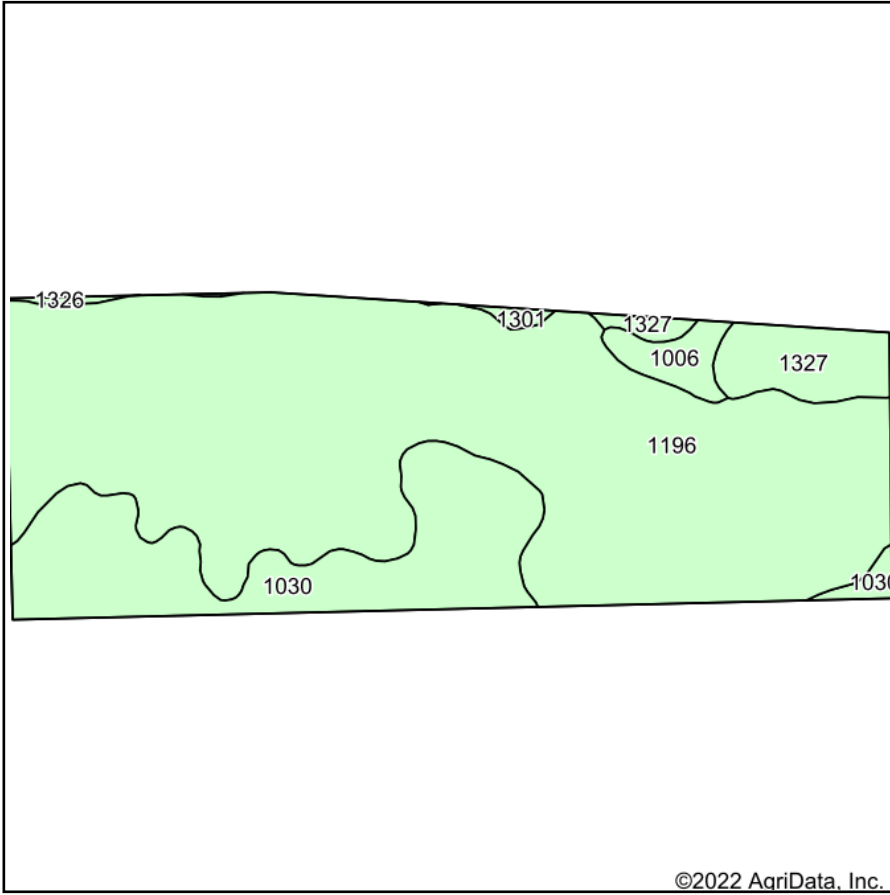


Soils Map



State: **Nebraska**
 County: **Cheyenne**
 Location: **27-14N-47W**
 Township: **Lodgepole**
 Acres: **216.86**
 Date: **11/23/2022**



915 Main St • Bridgeport, NE 69336 • 308-262-1150

Maps Provided By:



© AgriData, Inc. 2021

www.AgriDataInc.com



Soils data provided by USDA and NRCS.

©2022 AgriData, Inc.

Area Symbol: NE033, Soil Area Version: 22

Code	Soil Description	Acres	Percent of field	Non-Irr Class *c	Irr Class *c	Range Production (lbs/acre/yr)	SRPG	Corn Irrigated Bu	Dry beans Irrigated Bu	Winter wheat Bu	*n NCCPI Soybeans
1196	Las loam, occasionally flooded	158.47	73.1%	IVw	IIw	4000	43	134	35	28	36
1030	Glenberg fine sandy loam, 0 to 2 percent slopes	41.13	19.0%	IIIe	Ile	2515	37	134	34	36	33
1327	Bayard fine sandy loam, 0 to 3 percent slopes	11.21	5.2%	IIIe	Ile	1610	52	127	36	37	36
1006	Bankard loamy fine sand, channeled, frequently flooded	4.58	2.1%	VIw		2416	17				13
1301	Bayard fine sandy loam, 3 to 6 percent slopes	0.86	0.4%	IVe	IIIe	2416	43	124	32	34	38
1326	Bayard fine sandy loam, 0 to 1 percent slopes	0.61	0.3%	Ile	Ile	2400	45	140	40	41	37
Weighted Average				3.80	*-	3550.6	41.8	130.8	34.1	29.5	*n 35

*n: The aggregation method is "Weighted Average using all components"

*c: Using Capabilities Class Dominant Condition Aggregation Method

*- Irr Class weighted average cannot be calculated on the current soils data due to missing data.

Soils data provided by USDA and NRCS.