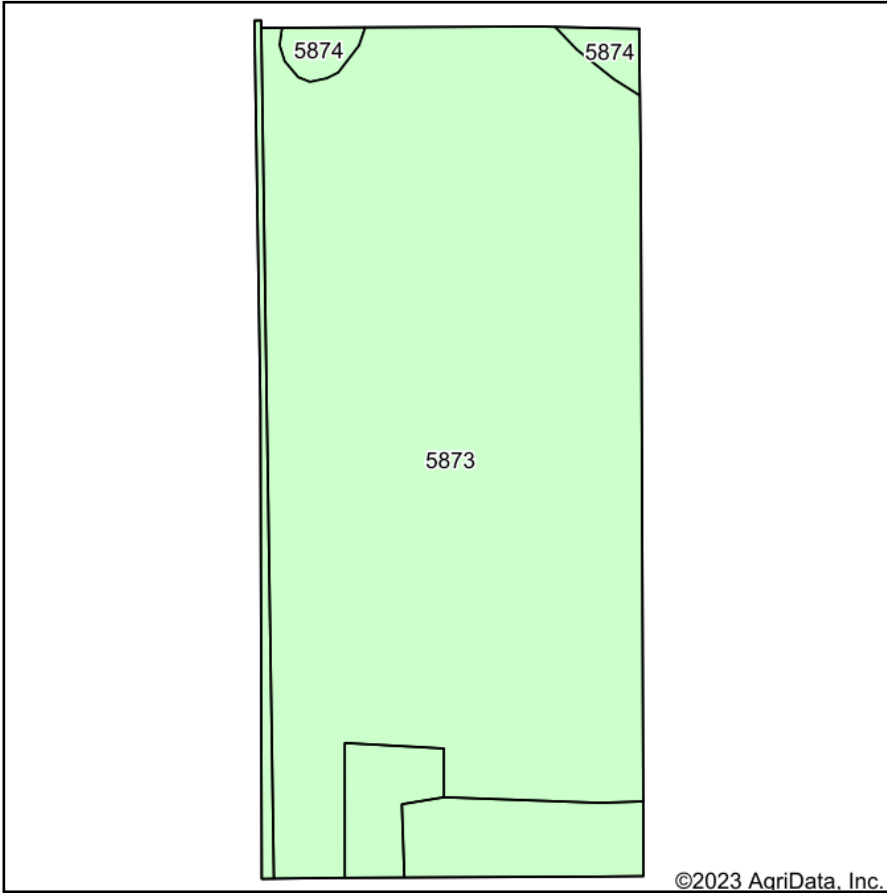
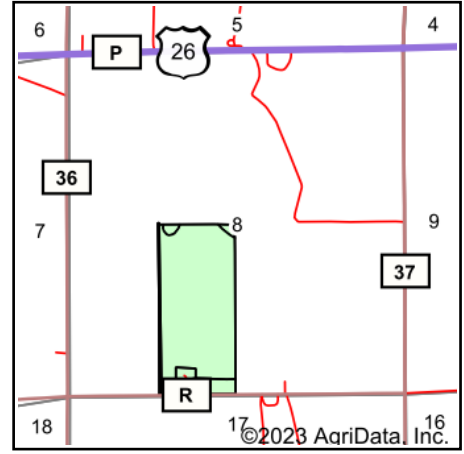


# Soils Map



Soils data provided by USDA and NRCS.



State: **Nebraska**  
 County: **Scotts Bluff**  
 Location: **8-21N-52W**  
 Township: **Highland**  
 Acres: **70.32**  
 Date: **5/30/2023**



Maps Provided By:



Area Symbol: NE157, Soil Area Version: 21

Code	Soil Description	Acres	Percent of field	Non-Irr Class *c	Irr Class *c	Range Production (lbs/acre/yr)	SRPG	Corn Irrigated Bu	Dry beans Irrigated Bu	Sugar beets Irrigated Tons	Winter wheat Bu	*n NCCPI Soybeans
5873	Tripp very fine sandy loam, 0 to 1 percent slopes	68.91	98.0%	IIIc	Ile	1700	57	135	42	24	44	36
5874	Tripp very fine sandy loam, 1 to 3 percent slopes	1.41	2.0%	IIIe	Ile	1693	56	130	40	23	41	36
<b>Weighted Average</b>				<b>3.00</b>	<b>2.00</b>	<b>1699.9</b>	<b>57</b>	<b>134.9</b>	<b>42</b>	<b>24</b>	<b>43.9</b>	<b>*n 36</b>

\*n: The aggregation method is "Weighted Average using all components"

\*c: Using Capabilities Class Dominant Condition Aggregation Method

Soils data provided by USDA and NRCS.