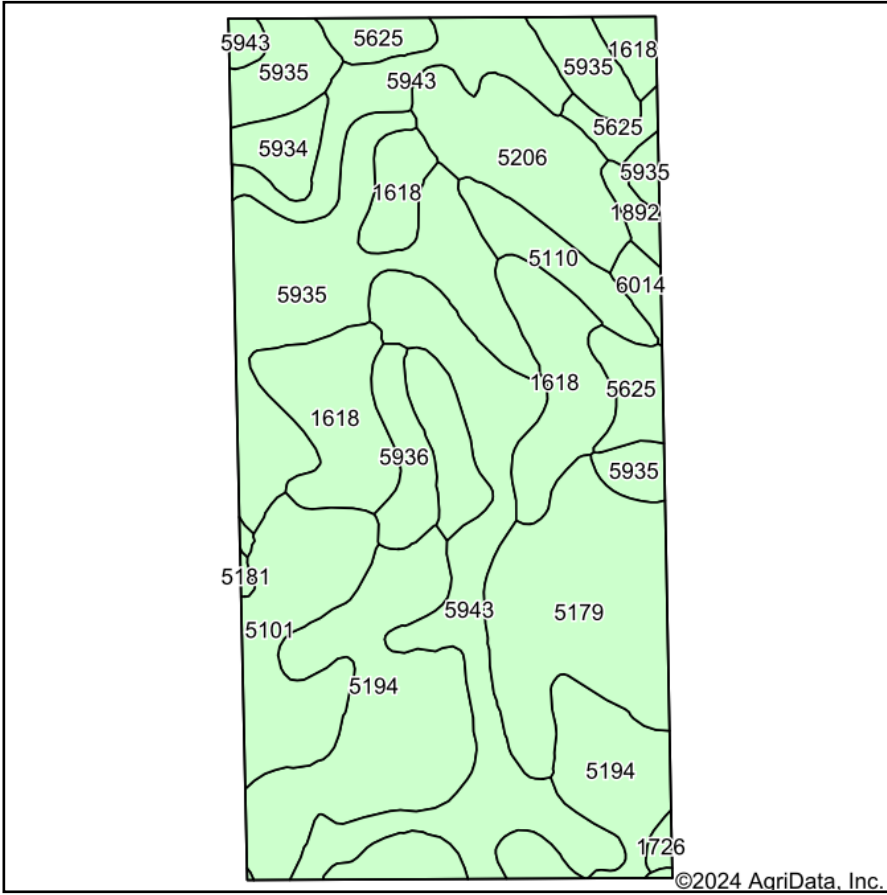
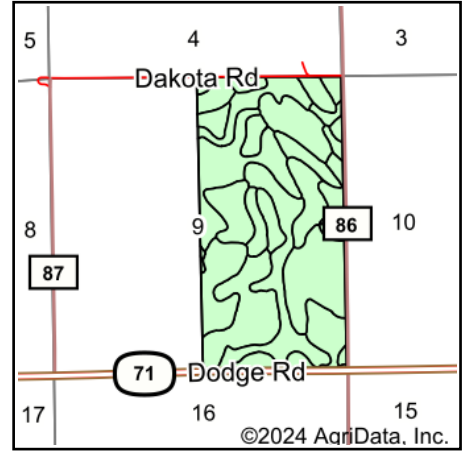


Soils Map



Soils data provided by USDA and NRCS.



State: **Nebraska**
 County: **Box Butte**
 Location: **9-27N-52W**
 Township: **Lawn**
 Acres: **318.22**
 Date: **2/26/2024**

KRAUPIE'S
 REAL ESTATE & AUCTIONEERS
 farmauction.net
 915 Main St • Bridgeport, NE 69336 • 308-262-1150

Maps Provided By:

 CUSTOMIZED ONLINE MAPPING
 © AgriData, Inc. 2023 www.AgriDataInc.com



Area Symbol: NE013, Soil Area Version: 24														
Code	Soil Description	Acres	Percent of field	Non-Irr Class *c	Irr Class *c	Range Production (lbs/acre/yr)	SRPG	Corn Irrigated Bu	Corn Bu	Dry beans Irrigated Bu	Sugar beets Irrigated Tons	Winter wheat Bu	Winter wheat Irrigated Bu	*n NCCPI Soybeans
5194	Norrest loam, 6 to 11 percent slopes	54.26	17.1%	IVe	IVe	1300	20					23		18
5943	Duroc loam, 1 to 3 percent slopes	54.02	17.0%	IIc		1342	55					32		43
5935	Creighton very fine sandy loam, 3 to 6 percent slopes	52.71	16.6%	IIIe	IIIe	1683	49	113		29	18	32		36
1618	Keith loam, 1 to 3 percent slopes	37.54	11.8%	Ile	Ile	1799	63	134						53
5179	Hemingford loam, 0 to 1 percent slopes	34.25	10.8%	IIc	Ie	1691	53	123		33	21	38		36
5101	Alliance loam, 1 to 3 percent slopes	21.45	6.7%	Ile	Ile	2411	58	140		30	19	34		42
5206	Oglala-Canyon complex, 3 to 9 percent slopes	18.94	6.0%	IVe	IVe	1959	38	92		23	14	23		27

Soils data provided by USDA and NRCS.



Code	Soil Description	Acres	Percent of field	Non-Irr Class *c	Irr Class *c	Range Production (lbs/acre/yr)	SRPG	Corn Irrigated Bu	Corn Bu	Dry beans Irrigated Bu	Sugar beets Irrigated Tons	Winter wheat Bu	Winter wheat Irrigated Bu	*n NCCPI Soybeans
5934	Creighton very fine sandy loam, 1 to 3 percent slopes	12.09	3.8%	Ile	Ile	1683	51	127		33	23	40		36
5625	Duroc loam, occasionally flooded	11.94	3.8%	IIw	IIw	2287	53	135		37	23	42		50
5110	Alliance-Rosebud loams, 6 to 11 percent slopes	7.89	2.5%	IVe	IVe	2092	40					27		38
5936	Creighton very fine sandy loam, 6 to 11 percent slopes	6.92	2.2%	IVe	IVe	1700	45					27		35
6014	Sarben-Busher loamy very fine sands, 0 to 3 percent slopes	2.37	0.7%	IIIe	IIIe	2200	44	115		28	18	31		31
1892	Valent loamy fine sand, 3 to 9 percent slopes	2.27	0.7%	VIe		1935	24	2	1					16
1726	Rosebud loam, 1 to 3 percent slopes	0.97	0.3%	IIIe		1803	32	85	55	1	1	29	2	32
5181	Hemingford loam, 3 to 6 percent slopes	0.42	0.1%	IIIe	IIIe	1685	51	101		25	15	29		35
1736	Rosebud-Canyon complex, 3 to 9 percent slopes	0.18	0.1%	IVe	IVe	1783	20	104		25	16	28		27
Weighted Average				2.76	*-	1679.1	46.7	73.9	0.2	14.6	9.3	27.1	*-	*n 36.3

*n: The aggregation method is "Weighted Average using all components"

*c: Using Capabilities Class Dominant Condition Aggregation Method

*- Irr Class weighted average cannot be calculated on the current soils data due to missing data.