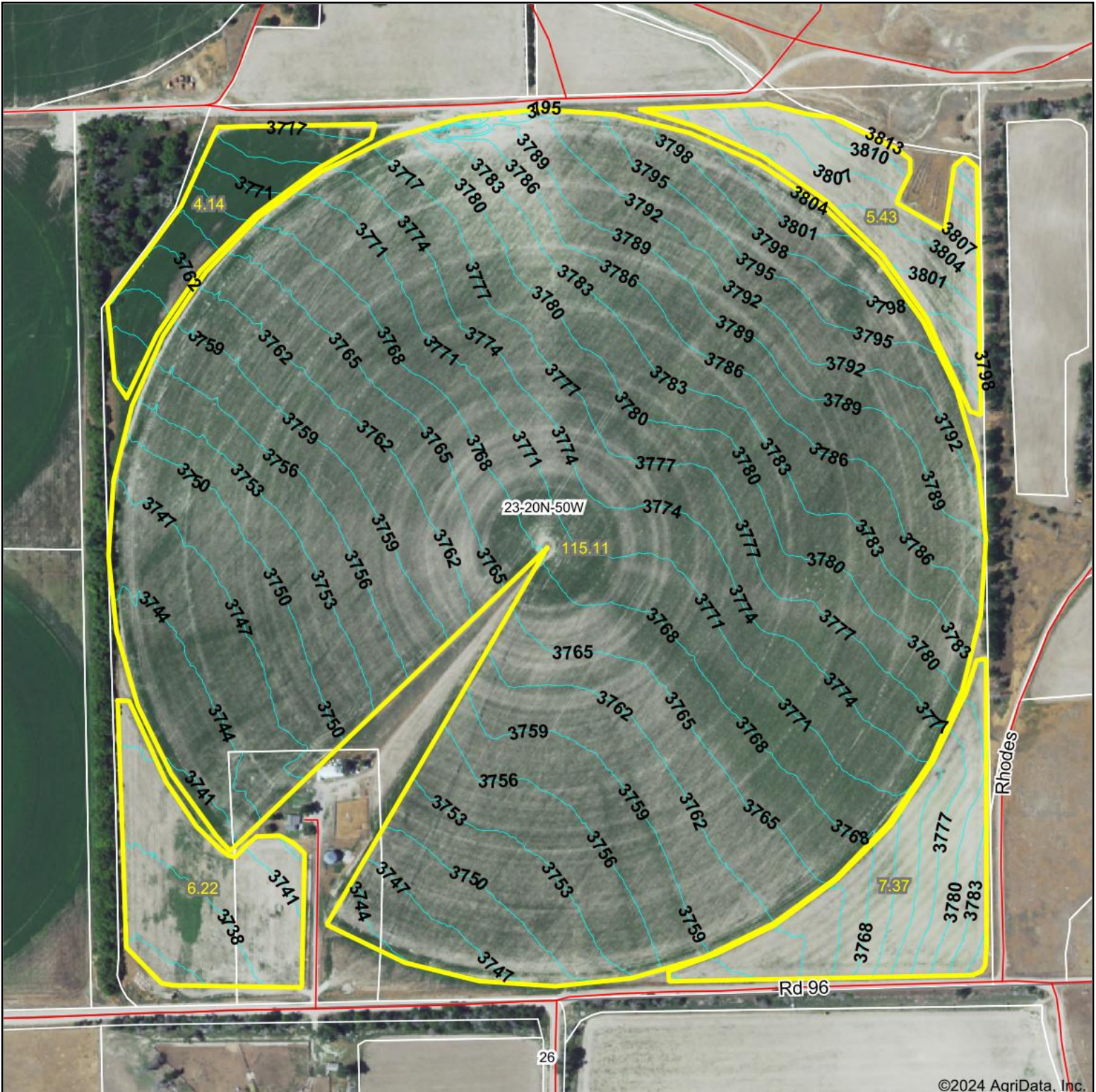


Topography Contours



©2024 AgriData, Inc.



915 Main St • Bridgeport, NE 69336 • 308-262-1150

Maps Provided By:



© AgriData, Inc. 2023 www.AgriDataInc.com

Field borders provided by Farm Service Agency as of 5/21/2008.

Source: USGS 1 meter dem

Interval(ft): 3.0

Min: 3,733.1

Max: 3,819.2

Range: 86.1

Average: 3,768.8

Standard Deviation: 16.96 ft

0ft 460ft 920ft



5/3/2024

23-20N-50W
Morrill County
Nebraska

Boundary Center: 41° 41' 17.82, -103° 3' 1.06