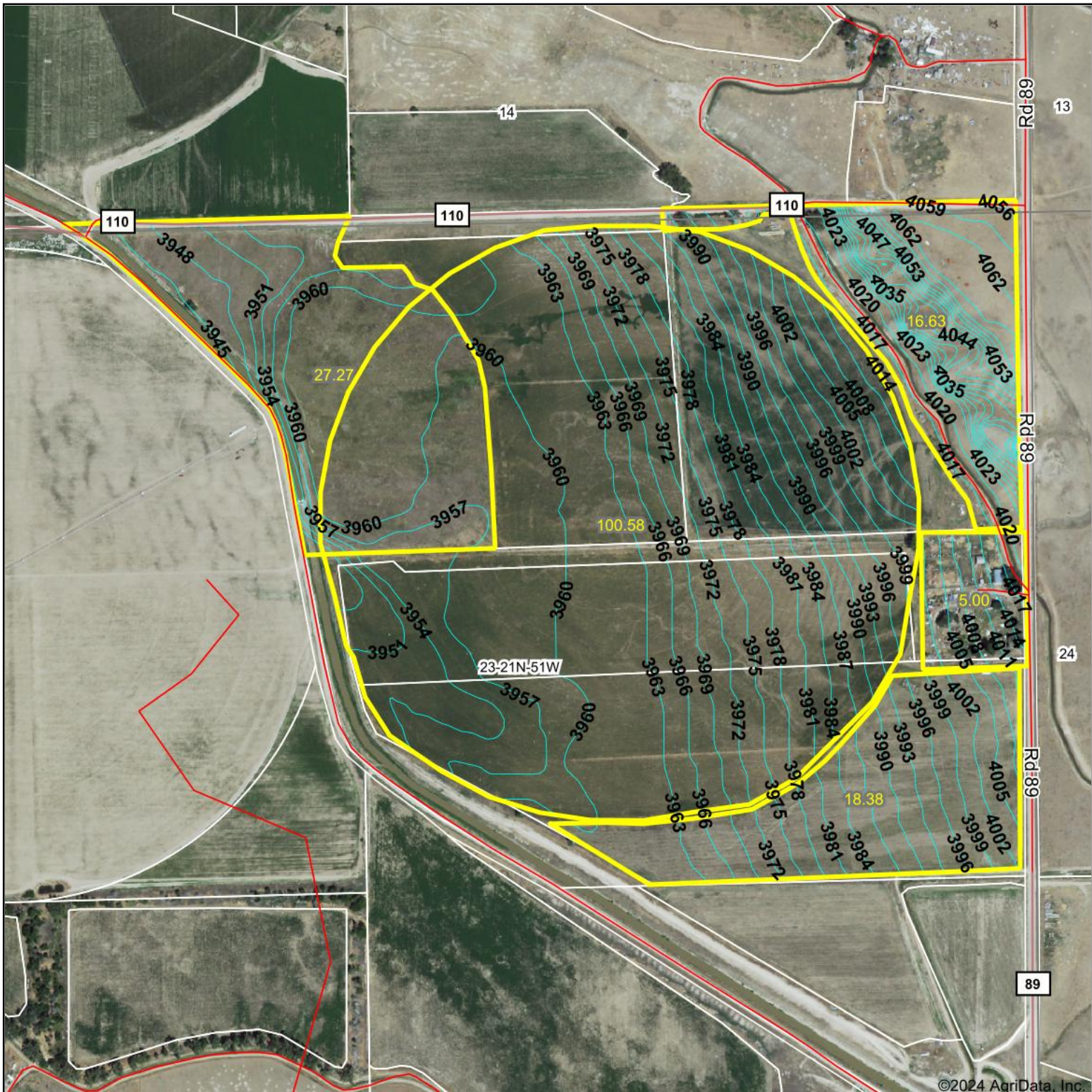


Topography Contours



915 Main St • Bridgeport, NE 69336 • 308-262-1150

Maps Provided By:



© AgriData, Inc. 2023 www.AgriDataInc.com

Field borders provided by Farm Service Agency as of 5/21/2008.

Source: USGS 10 meter dem

Interval(ft): 3.0

Min: 3,932.6

Max: 4,074.4

Range: 141.8

Average: 3,976.4

Standard Deviation: 29.76 ft

0ft 609ft 1218ft



8/7/2024

23-21N-51W
Morrill County
Nebraska

Boundary Center: 41° 47' 1.42, -103° 11' 43.18