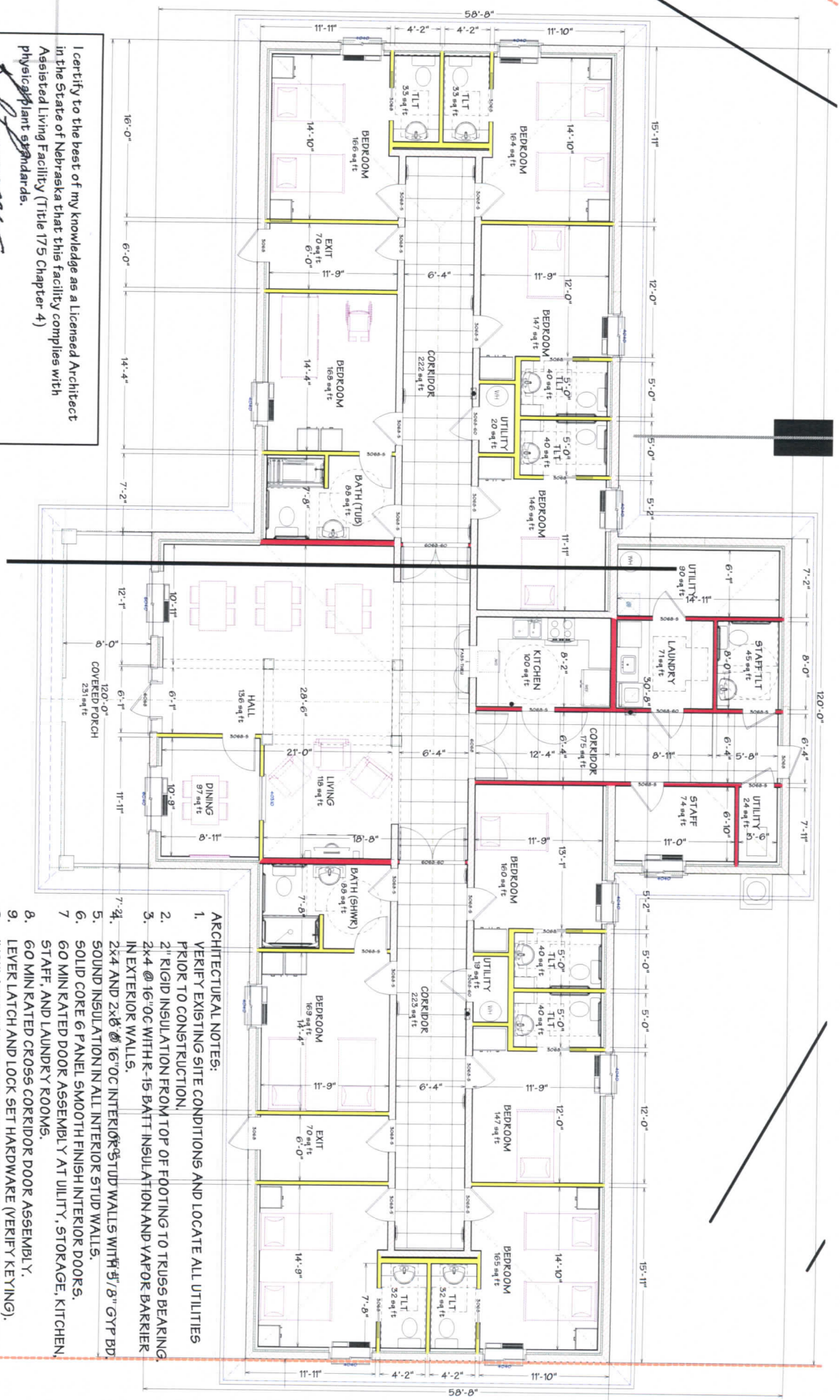


I certify to the best of my knowledge as a licensed Architect in the State of Nebraska that this facility complies with Assisted Living Facility (Title 175 Chapter 4) Physical/plant standards.

Rod Laucomer
 Rod Laucomer, Architect (A-1757) 05/04/2009

MAIN LEVEL - Architectural



- ARCHITECTURAL NOTES:**
1. VERIFY EXISTING SITE CONDITIONS AND LOCATE ALL UTILITIES PRIOR TO CONSTRUCTION.
 2. 2" RIGID INSULATION FROM TOP OF FOOTING TO TRUSS BEARING IN EXTERIOR WALLS.
 3. 2x4 @ 16" OC WITH R-15 BATT INSULATION AND VAPOR BARRIER IN EXTERIOR WALLS.
 4. 2x4 AND 2x8 @ 16" OC INTERIOR STUD WALLS WITH 5/8" GYP BD.
 5. SOUND INSULATION IN ALL INTERIOR STUD WALLS.
 6. SOLID CORE 6 PANEL SMOOTH FINISH INTERIOR DOORS.
 7. 60 MIN RATED DOOR ASSEMBLY AT UTILITY, STORAGE, KITCHEN, STAFF, AND LAUNDRY ROOMS.
 8. 60 MIN RATED CROSS CORRIDOR DOOR ASSEMBLY.
 9. LEVER LATCH AND LOCK SET HARDWARE (VERIFY KEYING).
 9. INSULATED HALF GLASS PANEL EXTERIOR DOOR WITH CLOSER.
 10. INSULATED LOW "E" GLASS AND SAFETY GLASS PER CODE.
 11. 5/8" GYP BD CEILING WITH R-48 BLOWN INSULATION IN VENTILATED ATTIC PER CODE.