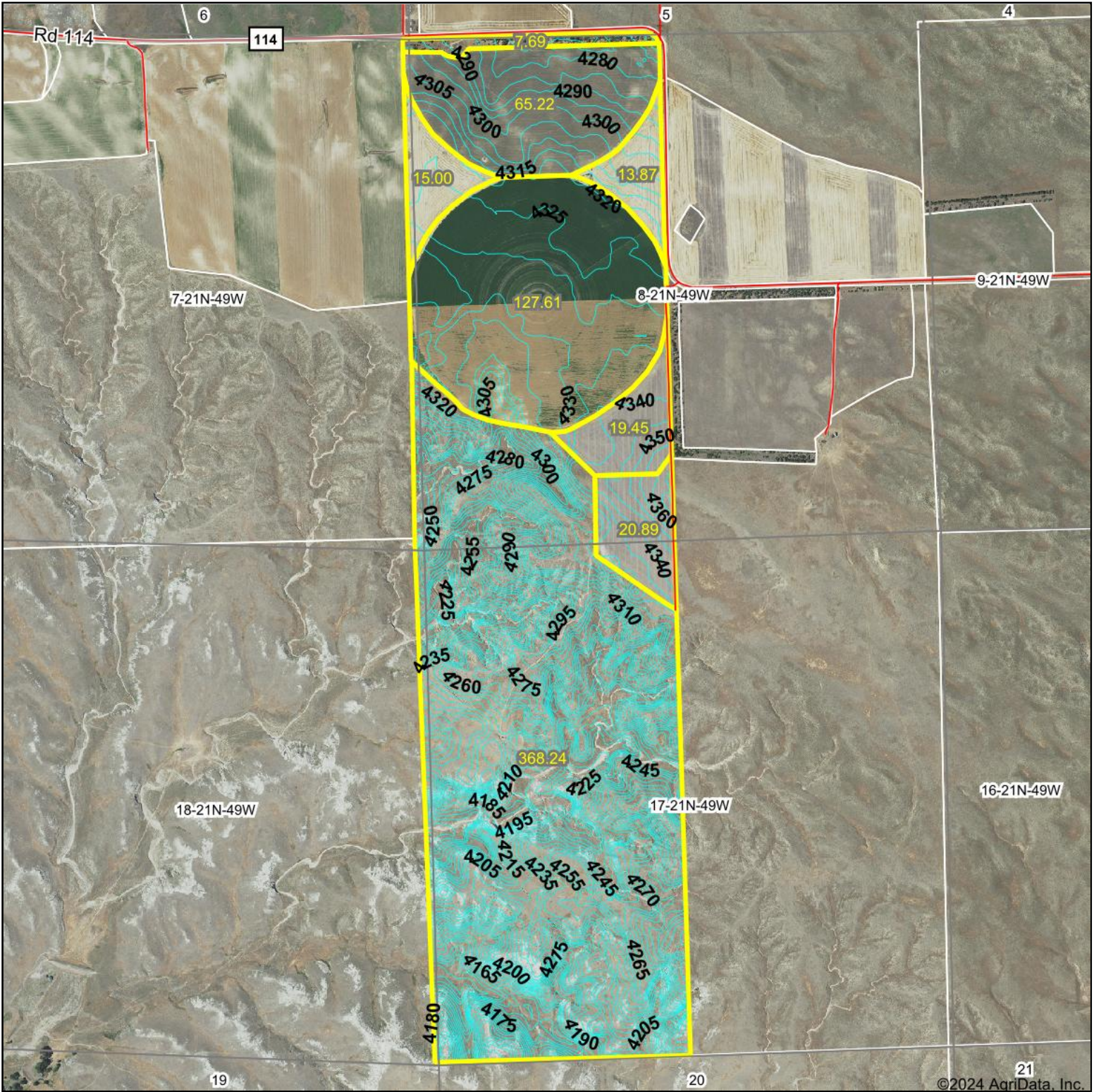


Topography Contours



©2024 AgriData, Inc.



915 Main St • Bridgeport, NE 69336 • 308-262-1150

Maps Provided By:



© AgriData, Inc. 2023 www.AgriDataInc.com

Field borders provided by Farm Service Agency as of 5/21/2008.

Source: USGS 10 meter dem

Interval(ft): 5.0

Min: 4,129.0

Max: 4,375.9

Range: 246.9

Average: 4,277.3

Standard Deviation: 50.33 ft

0ft 1597ft 3194ft



10/10/2024

17-21N-49W
Morrill County
Nebraska

Boundary Center: 41° 48' 0.65, -103° 1' 45.73