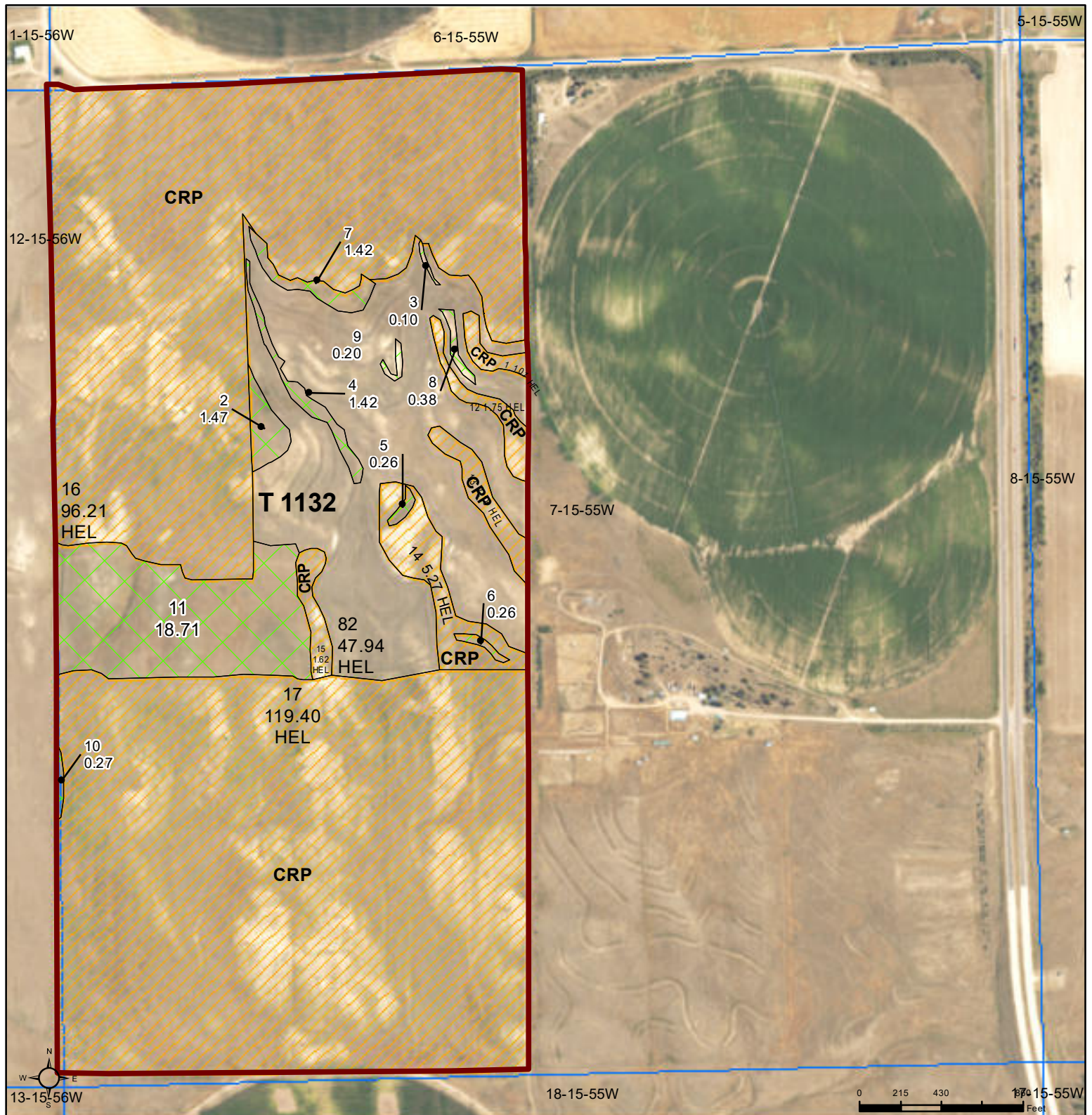




United States
Department of
Agriculture

Kimball County, Nebraska



Common Land Unit

- Non-Cropland
- Cropland
- CRP
- Tract Boundary
- PLSS

Wetland Determination Identifiers

- Restricted Use
- Limited Restrictions
- Exempt from Wetland Provisions

2024 NAIP Pre-Production Ortho Imagery

Alternate year NAIP imagery may be displayed for tracts physically located in other states, along state borders, or years of partial imagery acquisition.

Tract Cropland Total: 275.38 acres

2025 Program Year

Map Created June 30, 2025

Farm 3408

Tract 1132

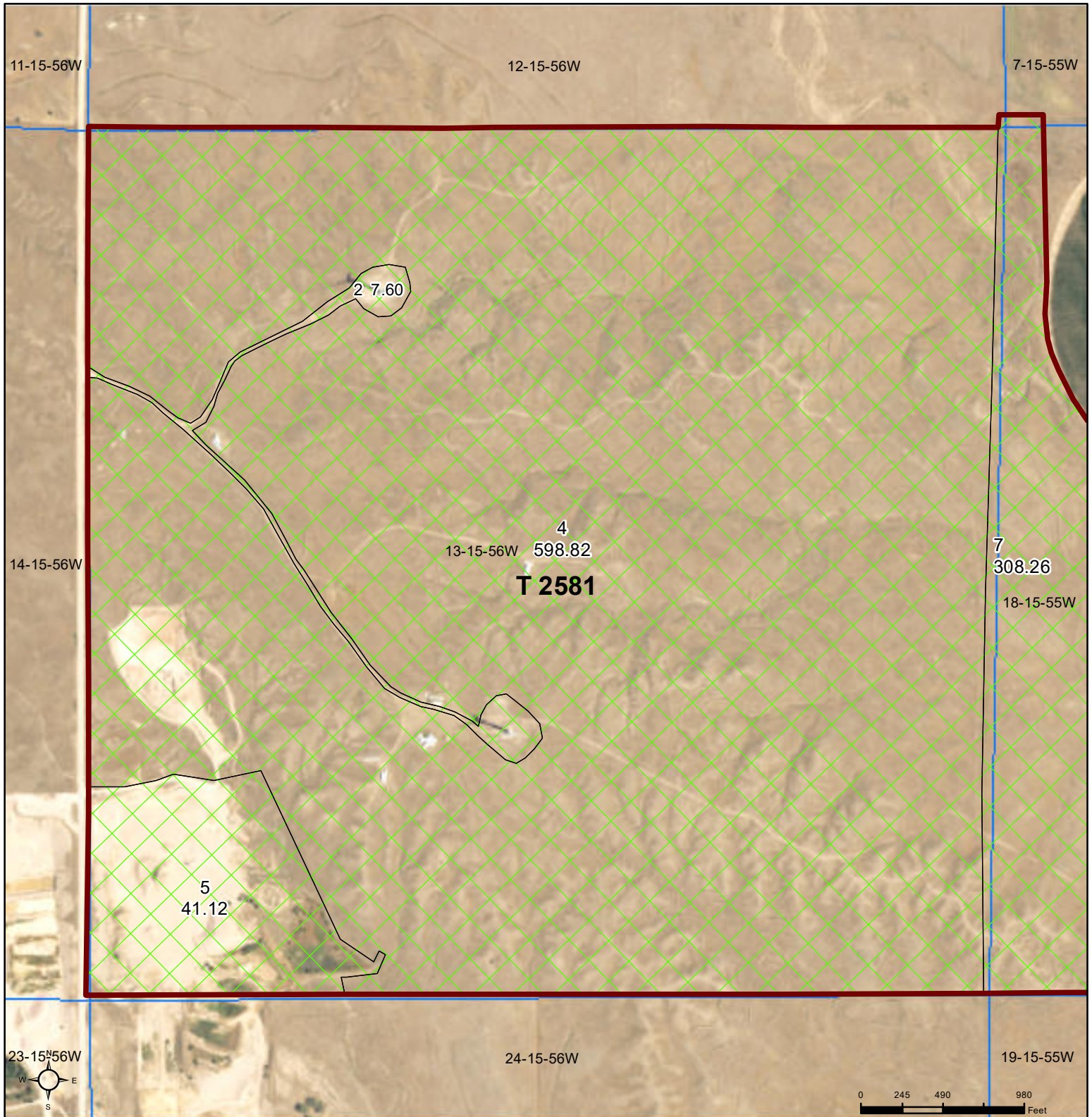
7-15-55W

United States Department of Agriculture (USDA) Farm Service Agency (FSA) maps are for FSA Program administration only. This map does not represent a legal survey or reflect actual ownership; rather it depicts the information provided directly from the producer and/or National Agricultural Imagery Program (NAIP) imagery. The producer accepts the data 'as is' and assumes all risks associated with its use. USDA-FSA assumes no responsibility for actual or consequential damage incurred as a result of any user's reliance on this data outside FSA Programs. Wetland identifiers do not represent the size, shape, or specific determination of the area. Refer to your original determination (CPA-026 and attached maps) for exact boundaries and determinations or contact USDA Natural Resources Conservation Service (NRCS).



United States
Department of
Agriculture

Kimball County, Nebraska



Common Land Unit PLSS

- Non-Cropland
- Tract Boundary

Wetland Determination Identifiers

- Restricted Use
- ▼ Limited Restrictions
- Exempt from Wetland Provisions

United States Department of Agriculture (USDA) Farm Service Agency (FSA) maps are for FSA Program administration only. This map does not represent a legal survey or reflect actual ownership; rather it depicts the information provided directly from the producer and/or National Agricultural Imagery Program (NAIP) imagery. The producer accepts the data 'as is' and assumes all risks associated with its use. USDA-FSA assumes no responsibility for actual or consequential damage incurred as a result of any user's reliance on this data outside FSA Programs. Wetland identifiers do not represent the size, shape, or specific determination of the area. Refer to your original determination (CPA-026 and attached maps) for exact boundaries and determinations or contact USDA Natural Resources Conservation Service (NRCS).

2024 NAIP Pre-Production Ortho Imagery
Alternate year NAIP imagery may be displayed for tracts physically located in other states, along state borders, or years of partial imagery acquisition.

Tract Cropland Total: 36.24 acres

2025 Program Year

Map Created June 30, 2025

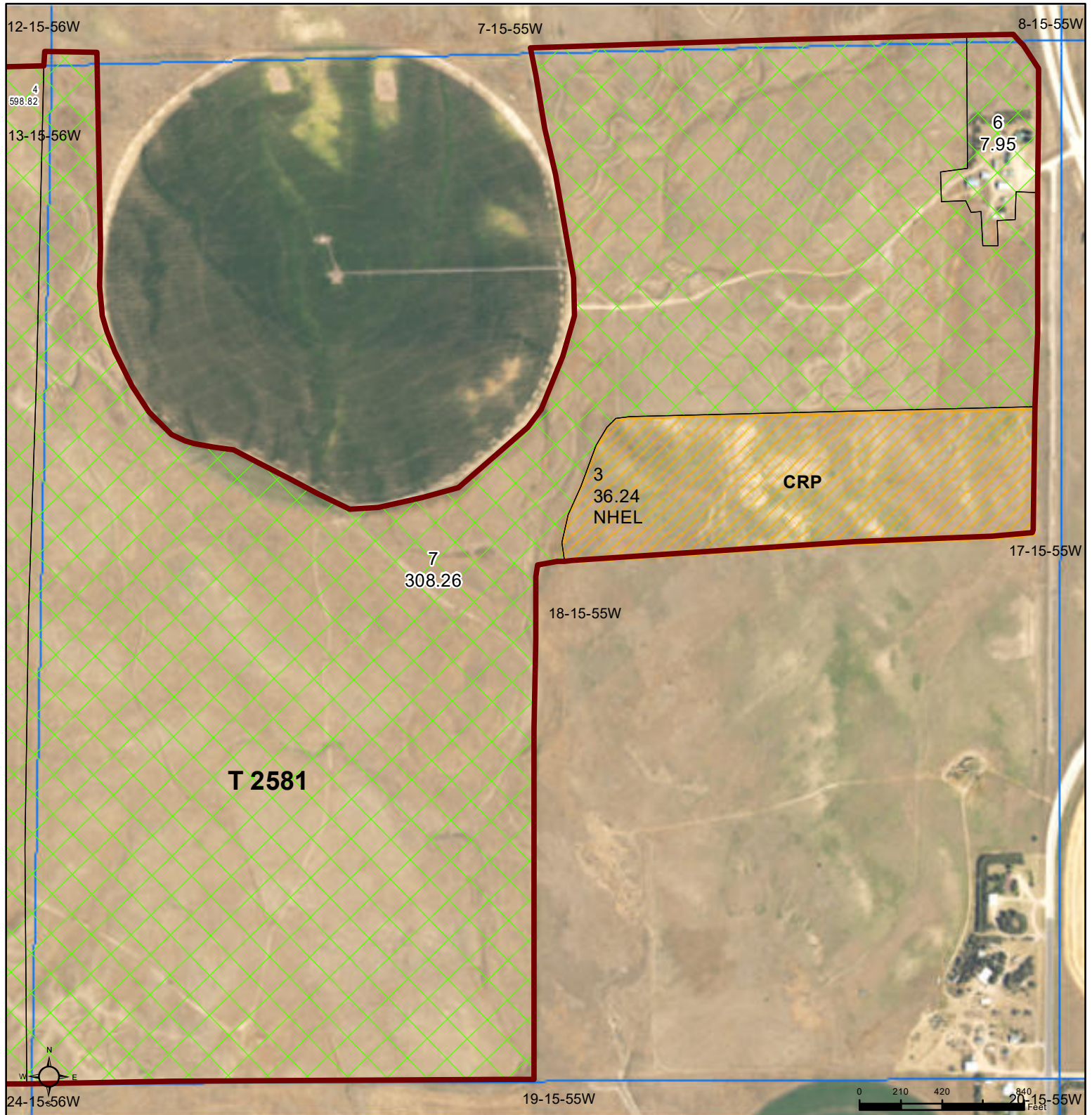
Farm 3408
Tract 2581

13-15-56W



United States
Department of
Agriculture

Kimball County, Nebraska



Common Land Unit

- Non-Cropland
- Cropland

CRP

- Tract Boundary
- PLSS

Wetland Determination Identifiers

- Restricted Use
- Limited Restrictions
- Exempt from Wetland Provisions

2024 NAIP Pre-Production Ortho Imagery

Alternate year NAIP imagery may be displayed for tracts physically located in other states, along state borders, or years of partial imagery acquisition.

Tract Cropland Total: 36.24 acres

2025 Program Year

Map Created June 30, 2025

Farm **3408**

Tract **2581**

18-15-55W

United States Department of Agriculture (USDA) Farm Service Agency (FSA) maps are for FSA Program administration only. This map does not represent a legal survey or reflect actual ownership; rather it depicts the information provided directly from the producer and/or National Agricultural Imagery Program (NAIP) imagery. The producer accepts the data 'as is' and assumes all risks associated with its use. USDA-FSA assumes no responsibility for actual or consequential damage incurred as a result of any user's reliance on this data outside FSA Programs. Wetland identifiers do not represent the size, shape, or specific determination of the area. Refer to your original determination (CPA-026 and attached maps) for exact boundaries and determinations or contact USDA Natural Resources Conservation Service (NRCS).